

PHONE { 542-7947
542-4407
542-4408
542-4409

FREDERICK CLAGETT, Inc.

Electrical Contractors

ELECTRIC WIRING, FIXTURES, APPLIANCES, LAMPS, REPAIRS

4802 PIMLICO ROAD

BALTIMORE 15, MD.

June 16, 1963

United Evangelical Church
East & Dillon Street,
Baltimore 24, Maryland

Gentlemen:

Furnish and install 1 Hub electric PHM 6000-3 w dimmer and 1 Hub PHM 2500-2 w dimmer with 2 control stations, located beside existing breaker panel in Church entry. Dimmers will be located in basement under the above mentioned breaker panel. We will install a angle iron bracket on front wall of basement, and mount the dimmers on this bracket. The PHM 6000-3 w dimmer will control all lights in the Church proper. The PHM 2500-2 w will control pulpit lights only.

Cost of Est. #1....Two Thousand, Nine Hundred, Thirty-two & 32/100 Dollars, (\$2,932.32).

Addition to Est. #1

If it is desired to have and additional control station, for each of the dimmers mentioned above, so that the dimmers may be operated from the pulpit, also add \$191.30 to the above. Wiring for these control stations shall be run exposed in the basement area under the Church.

Estimate #2

Furnish and install 1 Hub PHM 6000-3 w dimmer for all lights in Church area properly, with control station at existing breaker panel, in Church entry. Dimmer located in basement under above mentioned panel.

Cost of Est. #2....Two Thousand, One Hundred, Twelve & 32/100 Dollars, (\$2,112.32).

Estimate #3

Furnish and install 1 manual control dimmer Hub #HK 2500-2 w for pulpit lights only. Dimmer to be located on pulpit near existing switches, that now control existing lights. Wiring from existing switches to this dimmer shall be exposed.

Cost of Est. #3....Four Hundred, Forty-six & 55/100 Dollars, (\$446.55).

Estimate #4

Furnish and install 1 Stonco fixture #6400 to operate off single pole switch. Switch located in pulpit fixture will be on beam at ceiling. Wiring to be run exposed for \$123.40.

Yours very truly,

Frederick Clagett, Inc.

446.55
+ 123.40
\$569.95

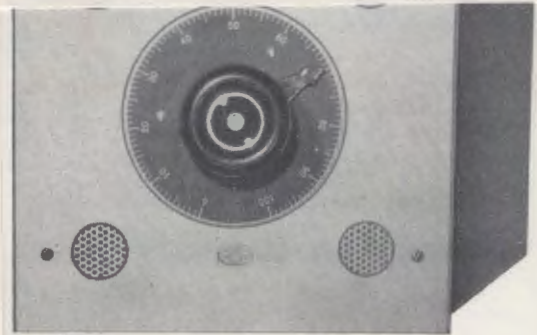
DIMMERS FOR CHURCH LIGHTS:

Mr. Coyle
Claeggett Electric Co.

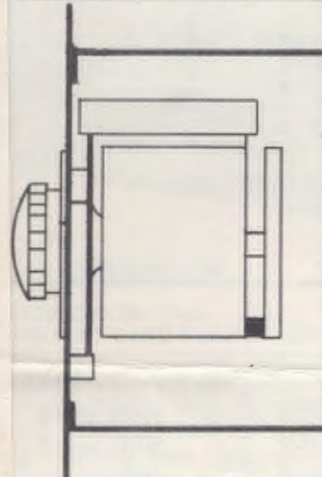
6,000 watt, 230 volt panel at church, necessitates 24 circuit panel on surface. The dimmer would be on surface, price \$825.00



CAT. NO. HL1200
LEVER CONTROL - SURFACE MOUNTED



CAT. NO. HK1000
KNOB CONTROL
FLUSH MTD.



APPLICATION

These non-interlocking, 120 V., 60 cycle, auto-transformer dimmers are furnished with enclosing housings and fronts for flush or surface mounting. They permit dimming control of incandescent or fluorescent lamp loads as indicated in table on reverse side.

SPECIFICATIONS

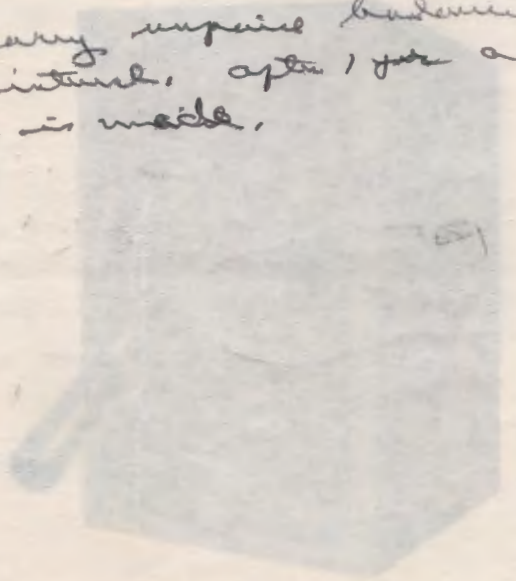
All units fabricated entirely of steel, with screen

backed vent holes. Recessed housing finished with a ground coat. Fronts and surface mounted housings finished in grey-green wrinkle finish. Also available in prime coat finish, when specified, to permit finishing on the job. Furnished with either knob control or lever control as indicated in table on reverse side.

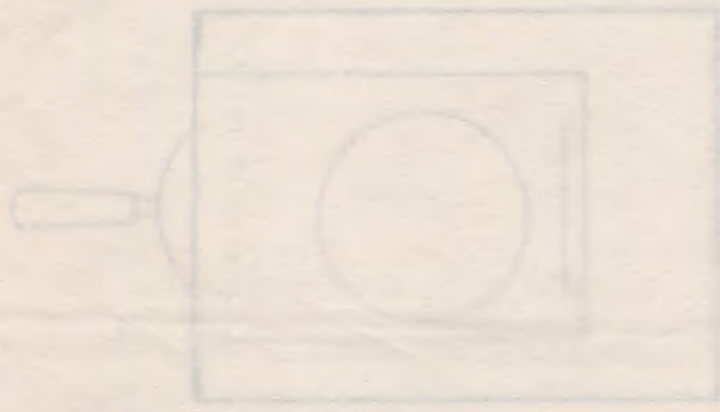
AVAILABLE AT EXTRA COST - 2500 W units can be furnished with 3 dimmers. Add suffix (-3) to Cat. No. Example: HK2500-3 or HL2500-3.

7600 - in 8 lanterns
 9000 - in perimetric lights
 3400 - in puppet area

will carry repair hardware
 at no interest, after 1 year a 6%
 charge is made.



CAT. NO. HL1250
 LEVER CONTROL - SURFACE MOUNTED



APPLICATION

These non-interlocking, 120 V., 60 cycle, auto-transformer dimmers are furnished with enclosing housings and fronts for flush or surface mounting. They permit dimming control of incandescent or fluorescent lamp loads as indicated in table on reverse side.

SPECIFICATIONS

All units fabricated entirely of steel, with screen

U.L. Approved

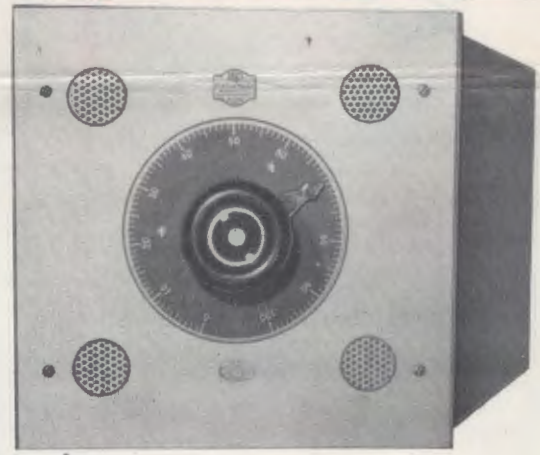
QUALITY SINCE 1914

CATALOG SUPPLEMENT NO. 10A*
 File in Catalog No. 100

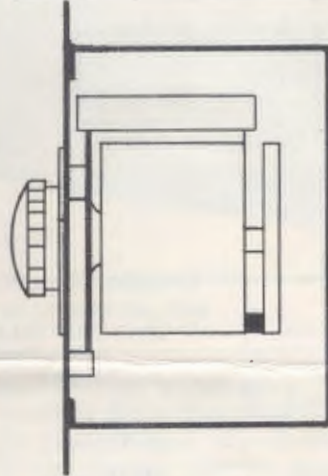
SECTION 2, PAGES 1 AND 2

Prices in Price List No. 101 B

*This supplement supercedes and replaces Supplement No. 10.



CAT. NO. HK1000
 KNOB CONTROL
 FLUSH MTD.



backed vent holes. Recessed housing finished with a ground coat. Fronts and surface mounted housings finished in grey-green wrinkle finish. Also available in prime coat finish, when specified, to permit finishing on the job. Furnished with either knob control or lever control as indicated in table on reverse side.

AVAILABLE AT EXTRA COST - 2500 W units can be furnished with 3 dimmers. Add suffix (-3) to Cat. No. Example: HK2500-3 or HL2500-3.



Hub Enclosed Dimmers

U.L. Approved

QUALITY SINCE 1914

ENGINEERED LIGHTING AND CONTROLS

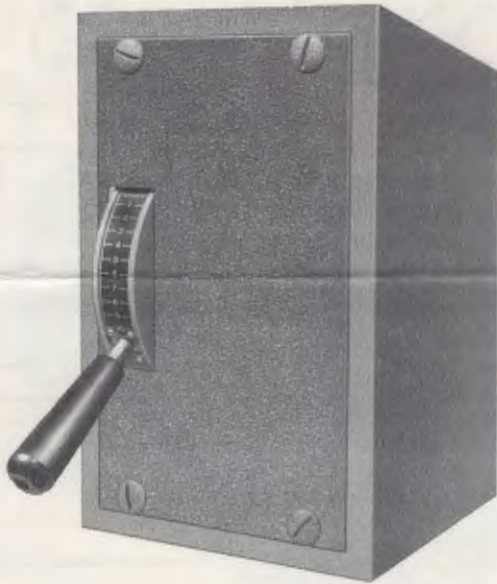
CATALOG SUPPLEMENT NO. 10A*

File in Catalog No. 100

SECTION 2, PAGES 1 AND 2

Prices in Price List No. 101 B

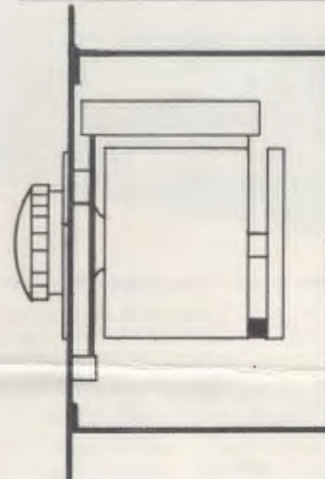
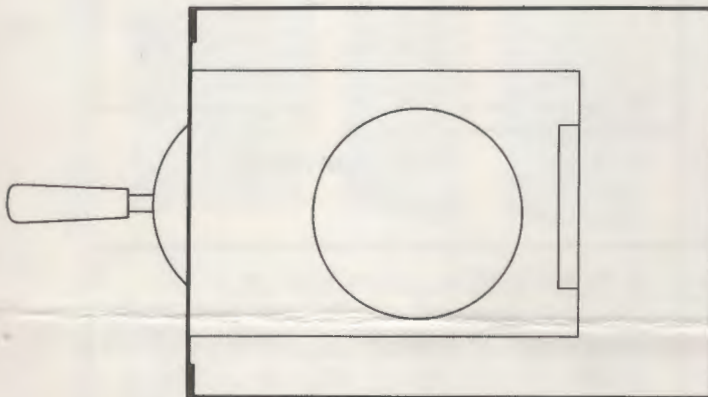
*This supplement supercedes and replaces Supplement No. 10.



CAT. NO. HL1200
LEVER CONTROL - SURFACE MOUNTED



CAT. NO. HK1000
KNOB CONTROL
FLUSH MTD.



APPLICATION

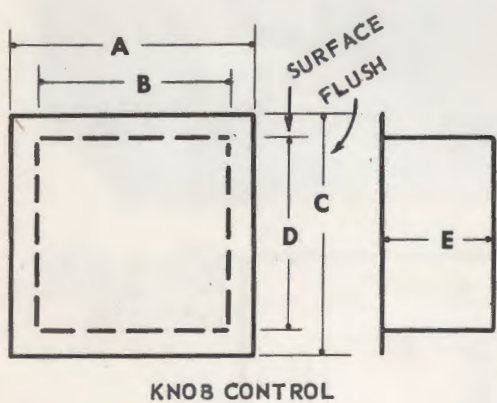
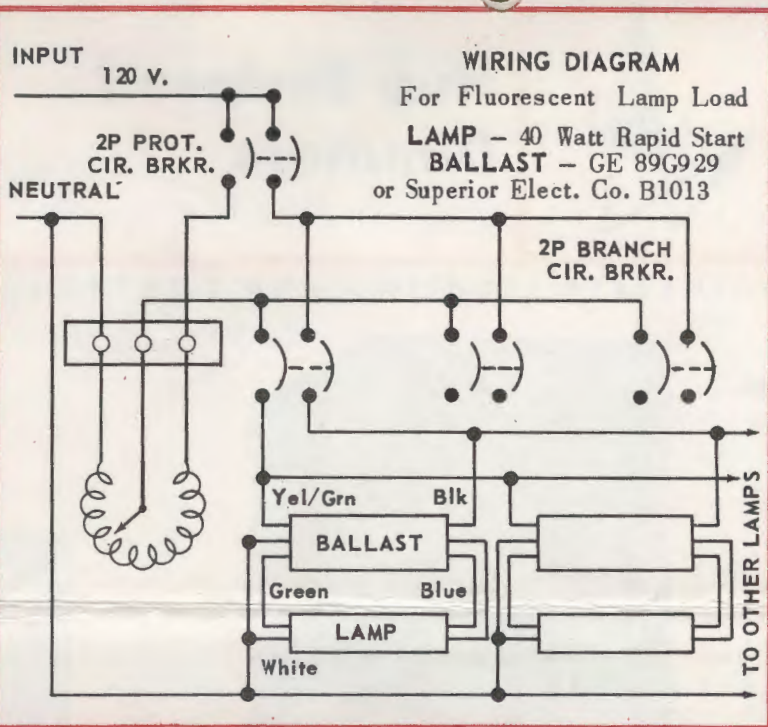
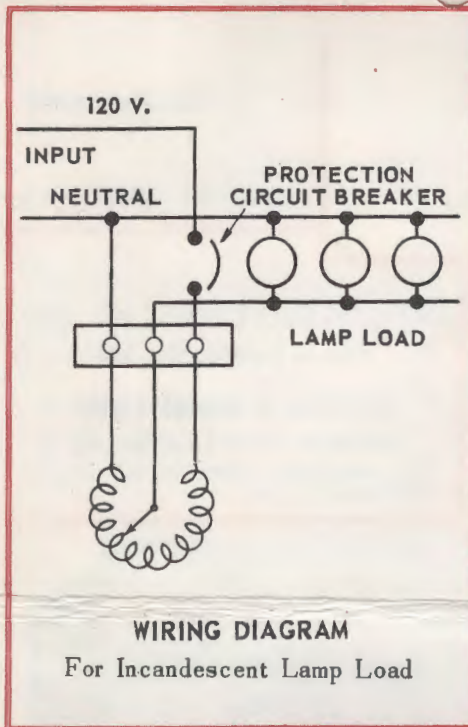
These non-interlocking, 120 V., 60 cycle, auto-transformer dimmers are furnished with enclosing housings and fronts for flush or surface mounting. They permit dimming control of incandescent or fluorescent lamp loads as indicated in table on reverse side.

SPECIFICATIONS

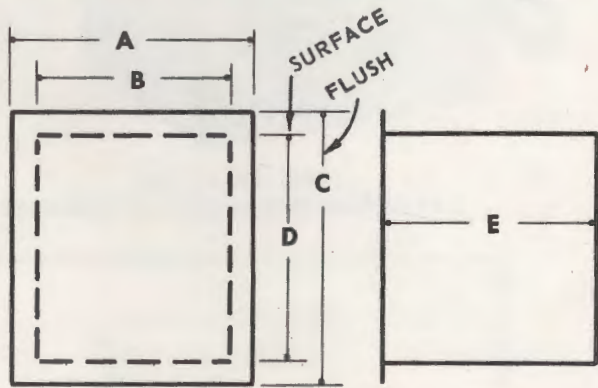
All units fabricated entirely of steel, with screen

backed vent holes. Recessed housing finished with a ground coat. Fronts and surface mounted housings finished in grey-green wrinkle finish. Also available in prime coat finish, when specified, to permit finishing on the job. Furnished with either knob control or lever control as indicated in table on reverse side.

AVAILABLE AT EXTRA COST - 2500 W units can be furnished with 3 dimmers. Add suffix (-3) to Cat. No. Example: HK2500-3 or HL2500-3.



KNOB CONTROL



LEVER CONTROL

KNOB CONTROL

NO. DIMMERS IN HOUSING	CAT. NO.	MAX. INCANDESCENT LAMP LOAD CONTROLLED	MAX. NO. FLUORESCENT LAMPS CONTROLLED *†	DIMENSIONS IN INCHES				
				A	B	C	D	E
1	HK1000	1000 watts	27	10	8	10	8	7½
1	HK2500-1	2500 watts	55	15	13	13	11	8
2	HK2500-2	5000 watts	110	15	13	13	11	13
1	HK6000-1	6000 watts	135	22	20	20	18	8
2	HK6000-2	12,000 watts	270	22	20	20	18	13

LEVER CONTROL

1	HL1200	1200 watts	30	11	9	11	135/8	12
1	HL2500-1	2500 watts	55	11	9	155/8	135/8	12
2	HL2500-2	5000 watts	135	16	14	155/8	135/8	12

* When used with new style GE 89G929 (or equal) dimming ballast ONLY. If old style dimming ballast GE 89G718 (or equal) is to be used, fluorescent auxiliaries are required and housing dimensions and number of lamps controlled will vary. Wiring and dimensional data available on request.

† 40 Watt, T-12, rapid start only.



Hub Motorized Positioner Control Dimmer Units

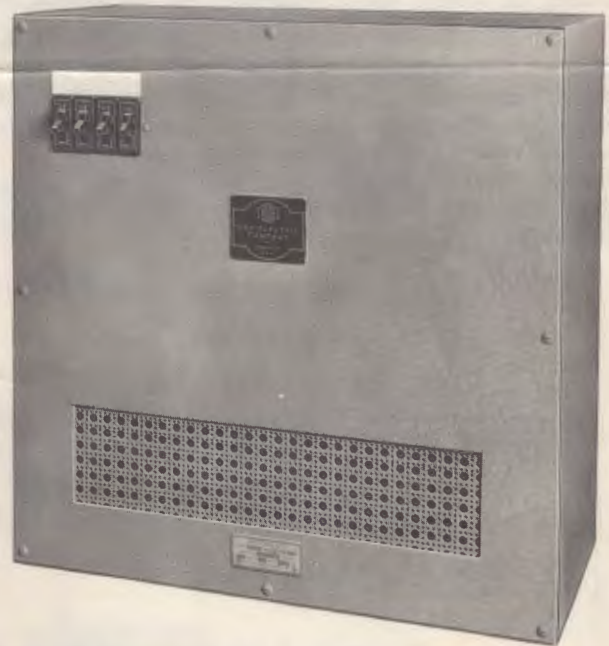
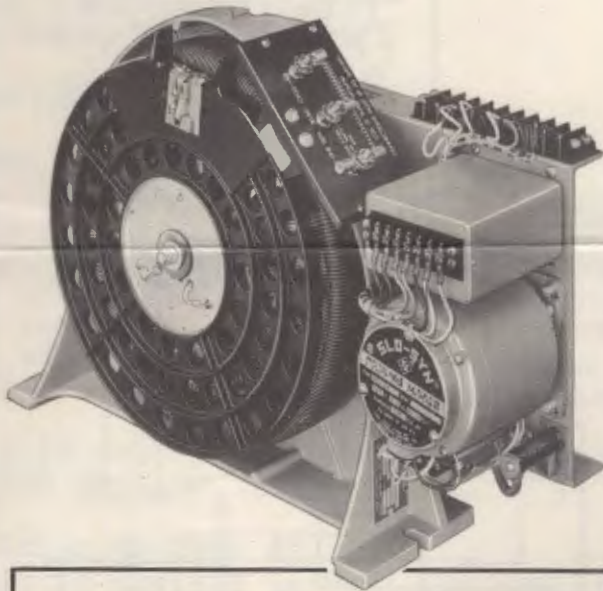
U.L. APPROVED

QUALITY SINCE 1914

ENGINEERED LIGHTING AND CONTROLS

CATALOG SUPPLEMENT NO. 73

File in Catalog No. 100
SECTION 2, PAGES 17 AND 18
Prices in Price List No. 101G



Remote Dimmer Control Stations

Two-gang Station: Supplied with all factory wired units — with positioner control potentiometer and on/off switch. More than one station can be associated with dimmer, however only one station at a time can control dimmer. Part No. PHC-1 (lever control) is illustrated. Part No. PHC-2 with rotary type control is also available (Specify).

One-gang Station: Supplied with unwired units — contains positioner control potentiometer only. If more than one control location is required, No. PHC-3 has lever control; Part No. PHC-4, rotary (Specify).

Cat. No. PHM6000-1W

cessity of someone remaining at the control during the travel of the dimmer motor (as with momentary contact control), and without the necessity of actually viewing the lighting intensity of the room (as, knowing when to release a momentary contact control). Another advantage is that the positioner control works on a 24 volt system.

You can go from full brightness to full blackout in a span of just 5 seconds* — or stop the motor-driven dimmers at any point you set on the control — to achieve the desired effect.

APPLICATION

These units provide the lighting control necessary to create or change moods in any hall, room, church or auditorium. Ideal for commercial, institutional and industrial applications where varied lighting intensities are important or desired.

Units are available for the control of incandescent lighting (PHM series) or fluorescent lighting (PFM series) with a capacity range of 2,500 watts to 18,000 watts.

A positioner control unit allows the dimmer to be set at a pre-determined intensity — without the ne-

* Note: Units are also available with 10 and 15 second motor speeds (full bright to blackout). Specify motor speed when ordering.

SPECIFICATIONS

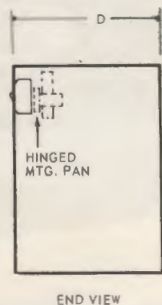
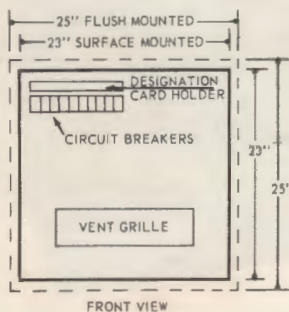


Housing and vent grille are of steel, finished with baked gray-green wrinkle enamel. Available with either flush or surface mounted housings; specify when ordering.

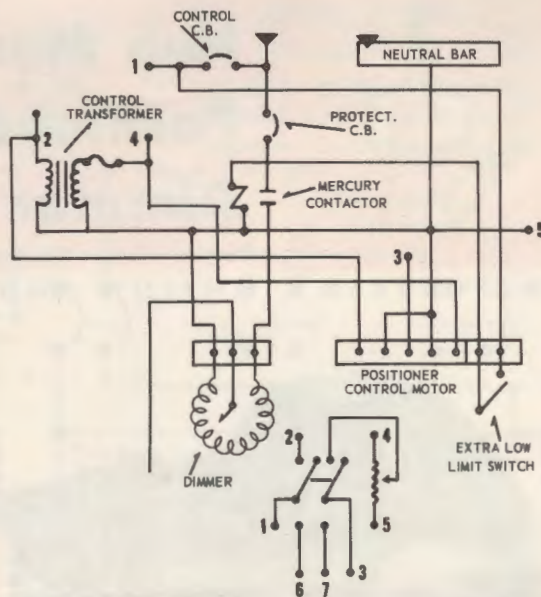
Dimmers are of the autotransformer type and units consist of one, two or three 6000 watt or one, two or three 2500 watt dimmers on a common shaft driven by a 5, 10 or 15 second (full bright to blackout: specify speed desired) motor.

Factory wired units come complete with dimmer protection, branch circuit and control circuit breakers, 24 volt potentiometer positioner controls and one two gang control station. Unwired dimmers come with one-gang control station. Control potentiometers available lever or rotary type (specify when ordering). Additional control station for 2 or more points of control are available (Part No. PHC-1).

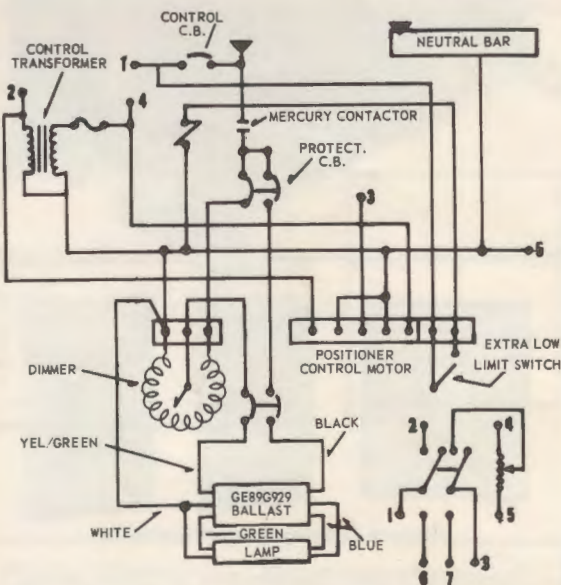
Notes on fluorescent dimming control: Each 2,500 watt dimmer can control fifty-five 40 watt rapid start lamps; each 6,000 watt dimmer, 135 lamps. Caution: In fluorescent dimming circuits, all protection and branch circuit breakers must be two pole. This dimmer system must use GE No. 89G929 dimming ballasts.



INCANDESCENT WIRING DIAGRAM



FLUORESCENT WIRING DIAGRAM



Catalog Number		Dimmers Per Unit	Total Capacity (Watts)	'D' In Inches	Factory Wired	Circuit Breakers Per Unit			Mercury Contactor	Control Station
Incandescent Control Unit	Fluorescent Control Unit					Protect	Branch	Control		
PHM2500-1	PFM2500-1	1	2500	14	No	BY OTHERS				
PHM2500-2	PFM2500-2	2	5000	19	No	BY OTHERS				
PHM2500-3	PFM2500-3	3	7500	21	No	BY OTHERS				
PHM2500-1W	PFM2500-1W	1	2500	14	Yes	1-25A	2-20A	1-20A	1	1
PHM2500-2W	PFM2500-2W	2	5000	19	Yes	2-25A	4-20A	1-20A	2	1
PH 2500-3W	PFM2500-3W	3	7500	21	Yes	3-25A	6-20A	1-20A	3	1
PHM6000-1	PFM6000-1	1	6000	14	No	BY OTHERS				
PHM6000-2	PFM6000-2	2	12000	19	No	BY OTHERS				
PHM6000-3	PFM6000-3	3	18000	21	No	BY OTHERS				
PHM6000-1W	PFM6000-1W	1	6000	14	Yes	1-50A	3-20A	1-20A	1	1
PHM6000-2W	PFM6000-2W	2	12000	19	Yes	2-50A	6-20A	1-20A	2	1
✓ PHM6000-3W	PFM6000-3W	3	18000	21	Yes	3-50A	9-20A	1-20A	3	1

16,600
Watts in
Church

3400 Watts
in Pulpit